

# MAKING REAL change... HAPPEN

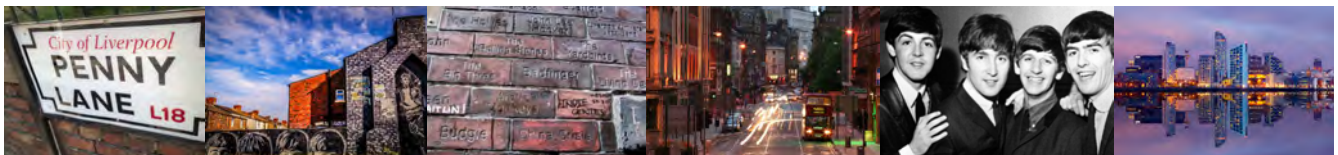
**ISPS** THE INTERNATIONAL SOCIETY  
FOR PSYCHOLOGICAL AND SOCIAL  
APPROACHES TO PSYCHOSIS

The 20th International Congress 30.08-03.09.2017 in Liverpool, UK

**INTERNATIONAL CONFERENCE ON PSYCHOLOGICAL & SOCIAL APPROACHES TO PSYCHOSIS**

## ISPS LIVERPOOL 2017

30th August - 3rd September 2017 - Liverpool, United Kingdom



### PLENARY SPEAKERS:

Jacqui Dillon, Jim van Os, Kwame McKenzie, Alison Brabban, Grainne Fadden, Rachel Waddingham, Svein Friis, Jon Vidar Strømstad and Anne Berit Eie Torbjørnsen

---

**BOOKING NOW OPEN:** See [www.isps2017uk.org](http://www.isps2017uk.org) or email [isps@isps.org](mailto:isps@isps.org) for more details.

---

ISPS 2017 is a multi-disciplinary conference, bringing together experts by experience and profession from around the globe. Focused around the theme of 'making REAL change happen', we are welcoming inspiring plenary speakers and offering lectures, workshops and symposia to suit every interest. All this take place in the wonderful, recently renovated, city of Liverpool with a series of social events to help you make the most of your time with us.

### THEMES INCLUDE:

Individual therapies . Group therapies . Arts and arts therapies . Innovative approaches Family and network therapies . Themes in therapeutic approaches (inc. therapeutic relationships and environments, peer support, spirituality, therapy in times of austerity) Working for change (inc. influencing decision makers) . Culture and ethnicity . The language of madness . Experts by experience . Power . Society's influence on mental health . Research approaches)

**ALSO SEE:** Richard Bentall, Jim Geekie, Peter Kinderman, Brian Martindale & John Read

**BOOKING NOW OPEN: [WWW.ISPS2017UK.ORG](http://WWW.ISPS2017UK.ORG) - EMAIL [ISPS@ISPS.ORG](mailto:ISPS@ISPS.ORG)**

# ISPS LIVERPOOL 2017

30th August - 3rd September 2017 - Liverpool, United Kingdom

## PLENARY SPEAKERS:



### **Jim van Os**

*Professor and Chairman of the Department of Psychiatry and Psychology at Maastricht University Medical Centre, Maastricht, The Netherlands*



### **Jacqui Dillon**

*National Chair of the Hearing Voices Network in England, mental health expert by experience, speaker, writer, activist, lecturer and research fellow.*

### **Alison Brabban,**

*National Clinical Advisor for Severe Mental Illness, NHS England, Clinical Psychologist, Recovery Lead in TEVV (NHS Trust in the North of England)*



### **Kwame McKenzie**

*CEO of the Wellesley Institute, international expert on the social causes of illness, suicide and the development of effective, equitable health systems*



### **Svein Friis**

*Emeritus Professor, Professor of psychiatry at the University of Oslo for 25 years and past Chairman of the Institute of Psychiatry*



### **Anne Berit Eie Torbjørnsen**

*Psychiatric nurse, Psychiatric Division of Stavanger University Hospital, Norway*

### **Grainne Fadden**

*Director – Meriden Family Programme, Birmingham & Solihull Mental Health NHS Foundation Trust - Honorary Senior Research Fellow, University of Birmingham*



### **Jon Vidar Strømstad**

*Psychiatric nurse, assistant ward leader, Psychiatric Division of Stavanger University Hospital, Norway*



### **Rachel Waddingham**

*Trustee of the English Hearing Voices Network, Chair of Interoice, experienced international trainer and member of the ISPS Executive Committee.*



### **Shelagh Musgrave**

*Mental Health Advocate, Carer Co-chair on the Recovery Programme Committee and Carer Experience Lead for the Families & Carers Pathway Project, BSMHFT*

**SPECIAL OFFER - SEE OUR WEBSITE FOR FREE CONFERENCE PLACES FOR:**

**THREE MEDICAL STUDENTS**

**PEOPLE FROM BLACK & MINORITY ETHNIC COMMUNITIES**

**SOCIAL EVENTS: JOIN US AS THE FAMOUS CAVERN CLUB & FERRY ACROSS THE MERSEY**

**BOOKING NOW OPEN: [WWW.ISPS2017UK.ORG](http://WWW.ISPS2017UK.ORG) - EMAIL [ISPS@ISPS.ORG](mailto:ISPS@ISPS.ORG)**